

Opening
doors
Changing
lives



Circa 1399

IPSWICH
SCHOOL

Founding Futures

BURSARY FUND

We believe an Ipswich School education should be an opportunity available to any child who has the potential to thrive regardless of their financial means or background.





*The right
education
can transform
a life - and
change a
community.*

Through the Founding Futures Bursary Campaign, we want to open up access to Ipswich School to any worthy pupil, regardless of their ability to pay.

This will help make a major contribution to education in Suffolk, building a better future for our students and our region.

From Ancient Foundations to Future Impact

Ipswich School is built on philanthropy. It is in our very foundations - from the generosity of Richard Felaw, who gave his house to accommodate the School, to the people of the town, who funded our Chapel in 1852. It is in our present - the outstanding generosity of the families and friends of Ipswich School and, of course, our Old Ipswichians. Philanthropy has been essential to our history, and will be to our future.

Ipswich is a wonderful place to live and work, but - like many

areas of the UK - it has its share of problems. Within the town, side-by-side with areas of prosperity, are several neighbourhoods that are within the top 10% most-deprived in all of England. More than 83,000 people in Suffolk live in a state of income deprivation. This is 12% of the county's population and includes 20,000 children and 25,000 older people*.

True to our foundation we have a responsibility to our local communities and future generations.

We want to help. One way we can do that is by addressing social mobility in our communities - **and that starts with education.**

*Source - Suffolk Community Foundation, Hidden Needs 2016



‘Paying it Forward...’

In the past, local authority Assisted Places schemes such as the Nacton, Queens and East Suffolk Scholarships meant that we were able to welcome many children irrespective of their parents’ financial means. Indeed some of you reading this will have benefitted from such schemes yourselves or know someone who has.

Today, that support is gone. There is no local authority support for places.

Thanks to the generosity of a number of donors, the School can make provision for some bursaries. But for many students with great potential, there is no financial assistance available.



Our Vision

We want Ipswich School to be able to welcome any child based solely on merit, potential and passion - whether or not their families can afford to pay.

But unlike many other independent schools, Ipswich does not have a large endowment providing bursaries to support children in the School. Every year we have to turn away deserving children with the potential to benefit from our outstanding educational and co-curricular opportunities.

We don't want to turn these children away. We want to say yes to every deserving family that applies for financial help.

We want to attract the best and the brightest, regardless of means, and to make an impact on social mobility within our community.

To do these things, we need such an endowment. And the time to start building it is **now**.



The ultimate goal of making the Ipswich School education available to all, irrespective of their financial situation, is one that I wholeheartedly support as it ties in perfectly with why the School was established and reinforces the School's close links to the town.

WILLIAM COE OI (1976 - 1987)
GOVERNOR, CAMPAIGN AMBASSADOR AND OI PRESIDENT 2019

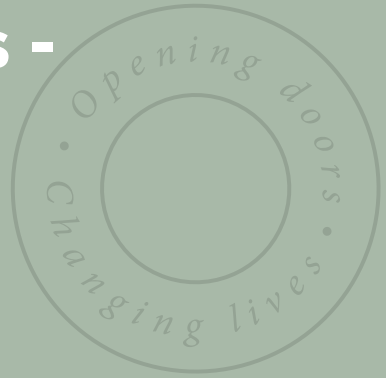


Founding Futures - Our Target

Founding Futures is the most ambitious fundraising campaign Ipswich School has ever launched. Now, more than ever, we need the Ipswich School community to come together to help bring this dream to fruition and transform the lives of young people for decades to come.

Through Founding Futures, we will not only immediately begin supporting children in their educational journey, but will also start to build an endowment that will resonate for years to come.

Join us in giving this gift to future generations of Suffolk children - the gift of a first-class education in outstanding surroundings; the gift of a foundation for future success.



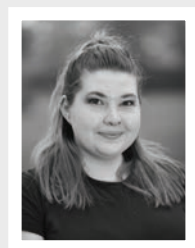
We need your help to fully fund at least 25 children into the School on 100% bursaries by 2025, and to endow another five funded places in perpetuity by 2030.



The Impact of Bursaries

The impact of a bursary far outweighs the actual amount given. It is an immeasurable gift that can redefine the life of its recipient.

Here is what some of our bursary recipients and donors have said about their experience.



“Without the assistance from my Ipswich School Bursary, I don’t believe that I would have been able to achieve half as much as I have. Ipswich School has provided me with an extensive level of support and a wide range of opportunities which would not have been available to me elsewhere.

Thankfully the generosity of the School allowed for me to learn and grow in an environment more suited to me, a School which I would not have otherwise been able to attend due to my family’s financial boundaries.”

ROSIE GEELMUYDEN OI (2011 - 2018) BURSARY RECIPIENT

.....



“Without a shadow of a doubt Ipswich School made me as a person and prepared me for adult life. The opportunities I find myself with going into the future are due to the fantastic education I received, not just in an academic sense but in a co-curricular sense also - experiences which will stay with me for the rest of my life.

I will forever be in gratitude for the bursary and scholarship schemes available at Ipswich and strongly believe in the potential they have for furthering social mobility in Suffolk and surrounding areas. I am sure many more people will continue to have experiences just like mine and this is testament to the fantastic work of Ipswich School.”

ALEX YEANDLE OI (2009-2016) BURSARY AND SCHOLARSHIP RECIPIENT



Education is for improving the lives of others and for leaving the community and world better than you found it.

MARIAN WRIGHT EDELMAN

FOUNDING FUTURE



“It is so necessary for Ipswich School to be able to provide bursaries for boys and girls who otherwise wouldn’t have the opportunity to come here - my education at this School gave me so much and I am delighted to have been able to give something back.

I hope my experience, and the joy it has given me to see this young person excel, will encourage other OIs to support the provision of bursaries in the future, at whatever level.”

KARL DANIELS OI (1944 - 1953) BURSARY DONOR
AND FORMER CHAIRMAN OF GOVERNORS



“Education is the most valuable legacy that one generation can bestow on the next. The recipient of the bursary which I funded will, I am sure, relish their good fortune, but the benefit extends to the wider School community. It is a privilege to have made the contribution and I urge others to do likewise.”

JOHN POULTER, BURSARY DONOR AND FORMER GOVERNOR

Giving in Numbers

100*

people giving
£13 per month

= a full
bursary for one
academic year

25*

people giving
£52 per month

= a full
bursary for one
academic year

48*

people giving
£27 per month

= a full
bursary for one
academic year

11*

people giving
£117 per month

= one full bursary
+ membership to
the Wolsey Club



Education is the
best weapon which
you can use to
change the world.

NELSON MANDELA



1*

person giving
£250,000



**= a full
bursary
in perpetuity**

1*

person giving
£108,000



**= a full
bursary from
years 7 - 13**

1*

person giving
£15,389



**= a full
bursary for one
academic year**



Support and Recognition

There are several ways you can support the campaign including single and regular tax-efficient donations, legacy pledges, gifts of stocks and shares and company sponsorship.







An
investment
in knowledge
pays the
best interest.

BENJAMIN FRANKLIN

Whether large or small, all donations make a difference to the campaign.

Founding Futures Friend:

All individuals who donate to the Founding Futures campaign will receive an acknowledgement in the Campaign's Annual Giving Report (unless requested to remain anonymous). All donors will receive regular updates on progress with the Campaign and the School.

Elizabethan Society:

A recognition group for all legacy donors. Membership is open to anyone who remembers Ipswich School in their Will. An annual event is held to thank Society members for their support and to inform them of news and developments at the School.

The Wolsey Club and Wolsey Business Club:

Named after Ipswich's most famous son and founder of Cardinal College, Cardinal Thomas Wolsey. This Club recognises those individuals or businesses who make a commitment to donate £1,399 per year for seven years (1399 being the earliest written record of the School). Members are invited to the annual Wolsey Dinner in recognition of their outstanding support.

Founding Futures Patron:

Fellowship of the Founding Futures campaign is awarded to any individual, group or organisation that makes a single or cumulative gift of £30,000 or more to the Campaign. The School will honour such generosity by placing the donor's name on the donor board in the School Chapel and invitations to selected VIP School events as well as membership to the Thomas Wolsey Club.

Founding Futures Fellow:

In recognition of any individual, family, group, company or organisation that makes a single gift or pledge to the Founding Futures campaign of £107,000 or more which is enough to fund one 100% bursary from years 7 to 13. The School will honour such generosity by placing the donor's name on the donor board in the School Chapel, membership to the Thomas Wolsey Club and invitations to selected VIP School events along with other benefits.

Founding Futures Benefactor:

In recognition of any individual, family, group, company or organisation that makes a single gift or pledge to the Founding Futures campaign of £250,000 or more which is enough to fund one 100% bursary in perpetuity. A bespoke arrangement will be made to recognise such outstanding support of the pupils of Ipswich School.



How to Donate

Single Gift:

By card:

By online payment (bank or credit card) - visit **www.ipswich.school/foundingfutures**

By bank transfer:

Ipswich School
Account number: 06485430
Sort Code: 30-94-55
Reference: your full name

In person:

You are very welcome to visit the School at any time and make a donation in person.

By cheque:

Please make your cheque payable to Ipswich School and post to:

The Development Office
Ipswich School
Henley Road
Ipswich
IP1 3SG



My memories of School were of great friends, of always playing sport and of many happy days. I was pleased to have an opportunity to give something back to the School so that pupils can hopefully get as much enjoyment from their school days as I had.

NIGEL LINGWOOD OI (1966-1977)



Regular gifts:

By Direct Debit

Call the Development Office on **01473 298964**, or visit **www.ipswich.school/foundingfutures**. Regular gifts allow us to plan for our future intake of bursary supported pupils in the School.

Stocks, shares, property and special gifts

If you would like to give a non-monetary gift please get in touch. Gifts can include assets, stocks, shares, property, works of art or gifts in kind. This can be an excellent, tax-efficient way of supporting the campaign.

Legacy Gift:

By remembering Ipswich School in your Will, you can make a very special contribution to the Founding Futures campaign. The impact of your gift will be felt long after it is made and will help the School achieve its long-term aims.

Gift Aid:

Don't forget to opt in for Gift Aid (if applicable) as this allows us to claim an extra 25% on top of your donation at no cost to you.

If you are a higher rate tax payer, you can also claim the difference between the higher rate of tax and the current basic rate of tax of 20%.

*For more information about how you can support the Founding Futures campaign or to discuss any potential gift please contact the Development Office on **01473 298961**, or email **development@ipswich.school***

Thank You



Ipswich School has an exceptional history, ethos and outlook. At its core are the students, and this campaign will ensure that all gifted children, whatever their background, can benefit from the array of academic, cultural, sporting and other opportunities that the School can offer.

These children deserve your support, and all gifts are welcome however large or small. Together we can make a difference.



RICHARD WILSON OI (1970 - 1981)
DONOR, GOVERNOR AND CHAIR OF THE
FOUNDATION AND DEVELOPMENT COMMITTEE

The Development Office exists to support the evolution of Ipswich School, build links with Old Ipswichians, assist with careers and encourage friendships both within and beyond the School years.



**IPSWICH
SCHOOL**

*Ipswich School
Development Office
Henley Road, Ipswich
Suffolk, IP1 3SG*

*Telephone: 01473 298964
Email: development@ipswich.school*

 [@ipswichschool](https://twitter.com/ipswichschool)

 [/ipswichschool](https://facebook.com/ipswichschool)

 [/ipswich_school](https://instagram.com/ipswich_school)

www.ipswich.school/foundingfutures

Registered Charity Number 310493



Registered with
**FUNDRAISING
REGULATOR**