



IPSWICH SCHOOL

13+ Entrance and Scholarship Examination

BIOLOGY

Practice Paper

Answer all the questions using the spaces on the question paper

Time allowed: 30 minutes

1. Complete the following table to link names of organs of the body with their functions:

Organ	Function
Lungs	
	Holding food before digestion
	Digesting and absorbing food
Kidney	
Brain	

2. A healthy diet needs to contain a variety of different substances. Name three of these substances that you need to eat to stay healthy, and say why each one is important.

Substance 1: _____

Importance: _____

Substance 2: _____

Importance: _____

Substance 3: _____

Importance: _____

3. Some things that we eat are thought to be bad for our health. Suggest two foods that could be bad for our health and explain why each could be doing us harm:

Food 1: _____

Harm Caused:_____

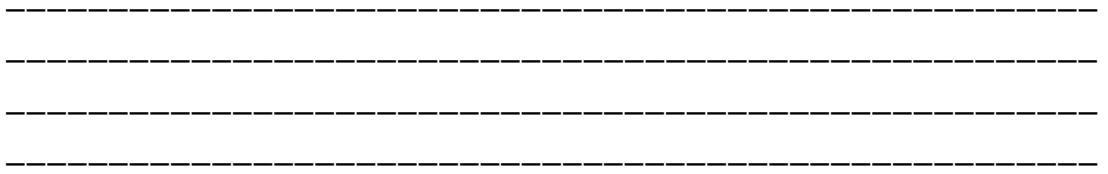
Food 2: _____

Harm Caused:_____

4. In my garden I can find the broken shells of snails that have been eaten by thrushes. The snails can be seen eating plants called Hostas. Sometimes my cat catches and eats one of the thrushes.

In the space below, draw a food chain to show this information.

I can find very many snails in the garden, but only one or two thrushes can ever be seen here. Explain why this is the case:



5. Explain how plants carry out the process of photosynthesis. You should say what happens in this process, and explain why green leaves are needed if you can.

What would happen to the rate of photosynthesis if I removed half of the leaves from a plant?

6. Plant leaves loose water all the time. What is the name of this process of water loss?

How do plant leaves replace the water that they lose? _____

7. A student recorded her pulse rate before and immediately after she ran round the games field.

What change would you expect her to see in her pulse rate after the exercise?

Why would you expect the pulse rate to change during exercise?



IPSWICH SCHOOL

13+ ENTRANCE AND SCHOLARSHIP PAPER

Chemistry Practice Paper Time allowed 30 minutes

Answer all the questions

1. This question is about gases.
 - a) Describe the difference between the gas particles found in a cylinder of:
 - i) nitrogen
 - ii) carbon dioxide
 - iii) air



(3 marks)

- b) When a full cylinder of butane (a different gas) is shaken, a liquid can be heard. Why would butane gas exist partly as a liquid inside a cylinder?

(1 mark)
- c) How could a balloon filled with nitrogen be turned into liquid nitrogen?

(1 mark)
- d) Two balloons contain the same number of particles. The balloon containing helium will float in air, but the balloon containing xenon sinks. Try to explain why this might be the case.

(1 mark)
- e) What safety symbol might you see on a cylinder of hydrogen?

(1 mark)

2. Polly likes looking after her bicycle. She has noticed that the chain gets more rust in the winter.

a. What two substances are needed for a chain to rust?

(2 marks)

b. What substance that is spread on roads might be causing her chain to rust more quickly in winter?

(1 mark)

c. What substance is used to try to prevent chains from rusting?

(1 mark)

d. Polly has noticed that the frame is painted. Would painting the chain be an effective way of preventing her chain from rusting? Explain your answer.

(1 mark)

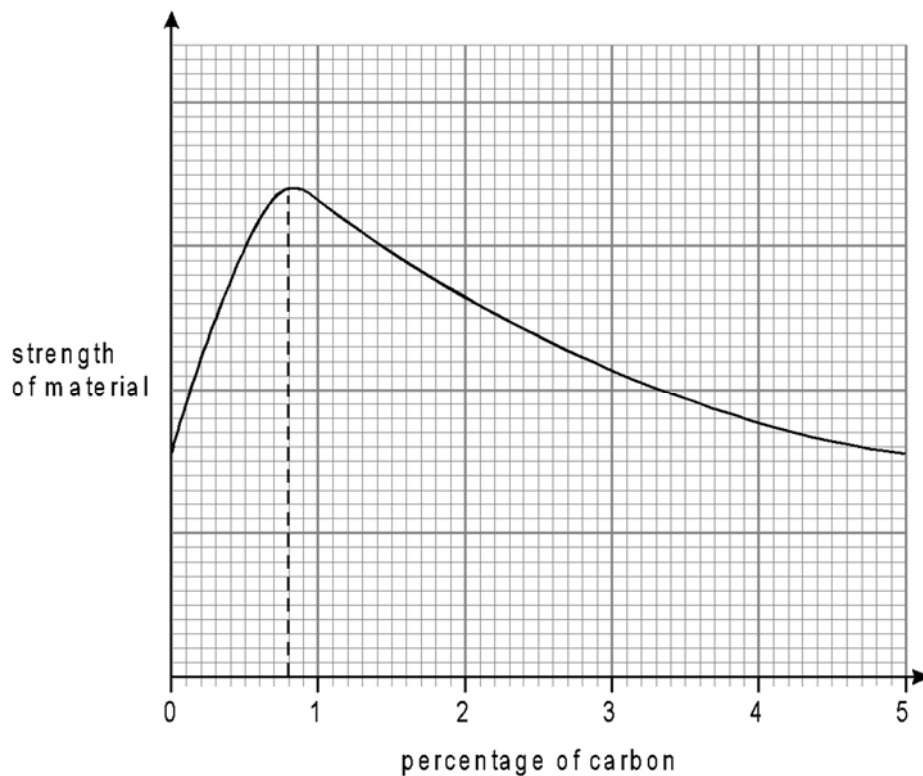
3. (a) The table below shows the percentage of carbon in four different materials.

name of material	percentage of carbon in the material
cast iron	4.5
high carbon steel	0.8
mild steel	0.3
wrought iron	0.1

Which material has the highest percentage of carbon?

(1 mark)

(b) The graph below shows how the percentage of carbon affects the **strength** of the materials.



Use the graph to find the percentage of carbon in the material with the greatest strength.

(1 mark)

e. Use your answer to part (i) to name the strongest material in the table.

(1 mark)

4. When a copper coin is heated in air it turns black and increases in mass. When green copper carbonate is heated it turns from green to black and becomes lighter as it forms copper oxide and carbon dioxide. The statue of liberty is made from copper and although when new, it was the same colour as a 2p coin, it now appears green and has more mass than when it was new.



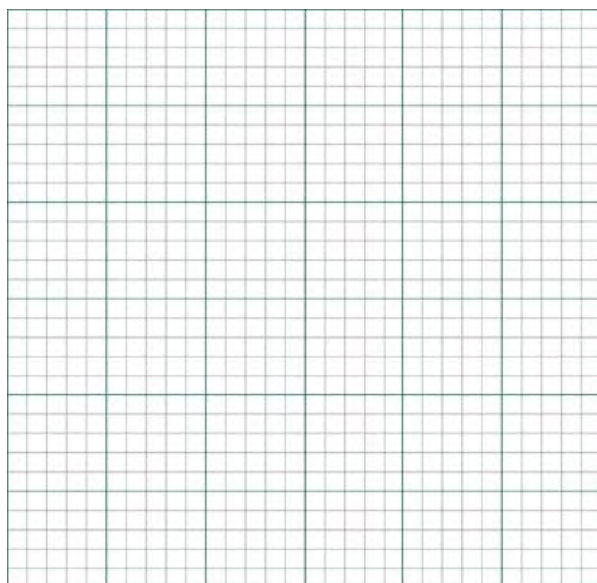
- a)
 - i. Why does the coin get heavier when heated?
 - ii. Write a word equation to help explain your answer to a)
- b)
 - i. Why does the copper carbonate get lighter when heated?
 - ii. Write a word equation to help explain your answer to b)
- c) What gas found in air might be reacting with the copper in the statue of liberty?

(5 marks)

5. The alkanes are a family of chemicals with similar chemical and physical properties. The first four alkanes are shown below with their formulae and the boiling points for three of them.

Substance	CH ₄	C ₂ H ₆	C ₃ H ₈	C ₄ H ₁₀
Boiling point (K)	109	184		272

- a) Plot a suitably labelled graph to show the boiling points of the alkanes



- b) Which two elements do these chemicals contain?
- c) Write the formula of an alkane with 5 carbons.
- d) Describe the trend in boiling point shown by the graph.
- e) Estimate the boiling point of C₃H₈
- f) How could a mixture of these chemicals be separated?
- g) Which two compounds will be formed when any of the above compounds is burned in air?

(10 marks)

30 marks total.

Answer all questions in **English**.

1 Places in town

Where do these signs point to?

Example:

Musée

Museum

1 (a)

Rivière

(1 mark)

1 (b)

Plage

(1 mark)

1 (c)

Centre Commercial

(1 mark)



1 (d)

Marché

..... (1 mark)

1 (e)

Piscine

..... (1 mark)

Turn over for the next question

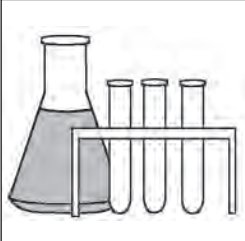




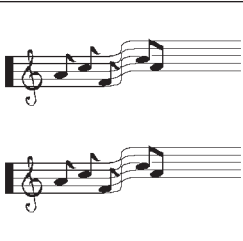

5

Turn over ►



2

School subjects

<p style="text-align: center;">A</p> 	<p style="text-align: center;">B</p> 	<p style="text-align: center;">C</p> $2 \times \frac{4x + 6y^2}{12 \times n}$ $\sqrt{352} \times 7$	<p style="text-align: center;">D</p> 
<p style="text-align: center;">E</p> 	<p style="text-align: center;">F</p> 	<p style="text-align: center;">G</p> 	<p style="text-align: center;">H</p> 

Match the subjects to the pictures. Write the correct letter in each box.

Example: mathématiques

C

2 (a)

français

(1 mark)

2 (b)

informatique

(1 mark)

2 (c)

dessin

(1 mark)

2 (d)

E.P.S.

(1 mark)



3 Holidays

A

J'adore les grandes vacances au bord de la mer. **Nazir.**

B

Je préfère faire du camping à la campagne. **Benjamin.**

C

J'aime visiter les monuments historiques dans les grandes villes d'Europe. **Estelle.**

D

Je préfère prendre l'avion, pour aller aux États-Unis, par exemple. **Rani.**

E

J'aime passer mes vacances dans les Alpes. J'adore le ski. **François.**

F

Je n'aime pas voyager. Je reste chez moi en été. **Caroline.**

Who likes to spend their holidays in these places? Write the correct letter in each box.

3 (a)

In big cities

(1 mark)

3 (b)

At home

(1 mark)

3 (c)

At the seaside

(1 mark)

3 (d)

In the countryside

(1 mark)



4 Social issues

A	Crime
B	Drugs
C	Being overweight
D	Homelessness
E	Alcohol abuse
F	Smoking
G	Unemployment
H	Divorce

Which problems are mentioned here? Write the correct letter in each box.

4 (a) Mon ami Rachid est trop gros. Il mange beaucoup de frites. (1 mark)

4 (b) On ne peut pas fumer dans les cafés. (1 mark)

4 (c) Sara est malade. Je pense qu'elle se drogue. (1 mark)

4 (d) Mon père ne travaille pas. Il ne peut pas trouver d'emploi. (1 mark)

4 (e) Armand boit trop de vin. (1 mark)



Turn over for the next question

DO NOT WRITE ON THIS PAGE
ANSWER IN THE SPACES PROVIDED

5

Turn over ►



5

Job vacancies

A

Boucherie Mathis

cherche employé(e)

lundi - vendredi

B

Salon de coiffure

cherche apprenti(e)

le lundi et mardi soirs

C

Hypermarché

cherche vendeur/vendeuse

seulement pour le samedi matin

D

Station-service

cherche caissier/caissière

samedi et dimanche, juillet - août

E

Fermier

cherche jeune

pour aider à la ferme

4 semaines en mars



Find a suitable job for the following people. Write the correct letter in each box.

5 (a)



Serge is a student looking for work in the summer holidays.

(1 mark)

5 (b)



Anne-Cécile is looking for part-time evening work.

(1 mark)

5 (c)



Tariq likes to keep the evenings and weekends free for sport.

(1 mark)

3

Turn over ►

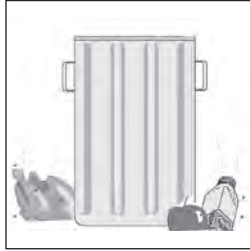


6 The environment

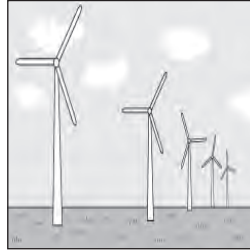
A



B



C



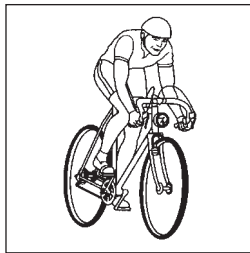
D



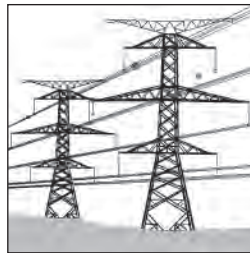
E



F



G



What issues are mentioned here? Write the correct letter in each box.

6 (a) Les jeunes n'utilisent pas les poubelles. Ils jettent leurs déchets partout. (1 mark)

6 (b) L'air est très pollué à cause des usines. (1 mark)

6 (c) Il y a trop de circulation sur les routes. C'est pourquoi, en Belgique, beaucoup de gens utilisent leur vélo. (1 mark)

6 (d) La pluie acide a beaucoup affecté les arbres de notre région. (1 mark)

6 (e) Si on prend une douche et pas un bain, on économise de l'eau. (1 mark)



7 Favourite hobbies

Choose a word from the list to fill the gap. Write the correct letter in each box.

Example: Quand il fait , j'aime nager dans la mer.

7 (a) Je suis fana de rugby. Les matchs au sont toujours super. (1 mark)

7 (b) J'ai un ordinateur dans ma , donc je peux faire des jeux-vidéo. (1 mark)

7 (c) J'adore l'équitation. Je voudrais mon cheval. (1 mark)

7 (d) Pendant mon temps libre je fais du skate. Je mes copains au parc. (1 mark)

7 (e) Mon équipe de foot un maillot rouge et un short blanc. (1 mark)

A	chaud
B	propre
C	jouent
D	rencontre
E	chambre
F	porte
G	stade
H	travailler
I	noire



8

Lifestyles



Aliyah

J'habite à Tombouctou au Mali. Comme dans beaucoup de pays en Afrique, il y a beaucoup de pauvreté chez nous. Il pleut rarement, donc il est difficile de cultiver les fruits et les légumes dont nous avons besoin. Mais heureusement ça commence à changer. Au collège on a de la chance, car on vient de recevoir quelques ordinateurs d'un lycée en France et d'une entreprise britannique. C'est génial, parce que je peux surfer sur Internet. Ma mère m'a aussi acheté un portable et avec, j'envoie tout le temps des textos à mes copines et j'écoute de la musique. J'espère apprendre comment envoyer des photos.



Didier

Moi, j'habite dans l'est, près de Besançon. Mon village est tranquille et un peu isolé mais je l'aime parce que je connais tout le monde et j'ai plein de copains pas trop loin de chez moi. Ça fait deux ans que j'ai un ordinateur, mais je l'utilise seulement pour participer aux forums où je me suis fait de nouveaux amis. J'adore faire des randonnées et, comme on est près des montagnes, je peux faire des promenades à pied ou à cheval quand je veux, et faire du ski en hiver. C'est cool!

Choose **four** sentences which are true. Write the correct letters in the boxes.

A	Aliyah thinks that Mali is different from lots of other countries in Africa.
B	Aliyah thinks that life is getting better in her country.
C	Other countries are helping Mali to have access to new technology.
D	Aliyah has sent photos to her friends on her mobile.
E	Didier feels isolated where he lives.
F	Didier has no friends apart from those he has met in chat rooms.
G	Didier is less experienced with technology than Aliyah.
H	Didier has lots of interests.

8

(4 marks)

END OF QUESTIONS





IPSWICH SCHOOL

13+Scholarship Examination

French

Writing

Practice Paper

Name:

School:

Time Allowed: 30 minutes



Each box should contain a colour; if any are white the map is incomplete and should be returned to the invigilator

Exam Extract 502/119

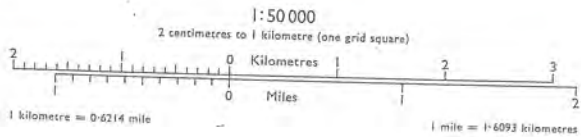
1:50 000 Second Series



Made by Ordnance Survey Southampton.



Diagrammatic only



Contour values are to the nearest metre. The vertical interval is, however, 50 feet. Heights are to the nearest metre above mean sea level

© Crown copyright 1979

Reproduction in whole or in part by any means is prohibited without the prior permission of the Ordnance Survey.

IPSWICH SCHOOL

13+ ENTRANCE AND SCHOLARSHIP EXAMINATION.

GEOGRAPHY

Practice Paper

Time allowed: 30 minutes

Answer QUESTION 1 (Compulsory) and ONE other question from the remaining THREE. You will need to refer to the OS Map extract of Ashbourne provided to answer QUESTION 1

Aim to answer question 1, worth 10 marks, in 10 minutes, then spend 15 mins on you chosen option question, 20 marks

Question 1: (Compulsory)

- i) Using evidence from the map explain how you know this is an area of high relief (1)
- ii) Which direction you would be travelling in if you followed the A52(T) from Mayfield to Swinscoe? (1)
- iii) Give the grid references for the following functions: Ashbourne Hospital (2)
Ashbourne Bus Station
- iv) Identify the man made features on the map at the following locations:
131506
093496 (2)
- v) Which way does the River Dove flow – North or South? Give a piece of map evidence to support your answer. (1+1)
- vi) Apart from settlement and road building, say what other uses man has made of the landscape shown on the map (2)

Turn over and **ANSWER ONE** of the remaining three questions

Question 2: Plate Tectonics

- a) Explain briefly how convection currents cause the plates of the Earth to move. (3)
- b) Draw a cross section diagram of any destructive plate margin you have studied. Clearly label the major landforms that are produced in such areas. (5)
- c) Why do volcanoes around the world vary so much in their destructive potential? (4)
- d) Explain how and earthquake occurs and the effects it can have on man. (2+4)
- e) Give two techniques that man has used to try and limit the damaged caused by earthquakes in the Developed World. (2)

Question 3: Rivers

- a) In its Upper Course a river's cross section is V-shaped. Describe how it changes as the river moves towards the sea. (2)
- b) Briefly describe some of the problems that result from a major flood in an urban area. Try and refer to an example you have studied (4)
- c) Describe briefly some of the ways that man can use to reduce the threat and damage caused by floods. (6)
- d) Using a diagram explain how a delta forms. Name an example of delta you have studied. (3+1)
- e) Outline some of the ways that Man uses rivers. You should refer to at least **FOUR** ways that man benefits from using running water. (4)

Question 4: Industry

- a) Briefly define the following types of industrial activity and give an example of each:
- i) PRIMARY
ii) SECONDARY
iii) TERTIARY (3x2)
- b) Using a named example from any of the groups shown above, show how the location of the industry is determined by transport and labour costs (6)
- c) What do you understand by the term 'Sectoral Shift'? (2)
- d) Patterns of industry are always influenced by changes in the economy. How would the following affect the pattern of industrial activity in an area?

- i) Increasing traffic congestion
- ii) The building of a high access ring road on the urban fringe
- iii) The provision of grants from the Government. (6)



IPSWICH SCHOOL

13+ Entrance and Scholarship

Examination

HISTORY

Practice Paper

Time allowed: 30 minutes

Read carefully the source that follows and then answer all the questions underneath it.

Do not worry if you have not studied Tudor History. This is not a test of knowledge, but of your ability to understand and use a historical source.

Read the italic caption above the source as carefully as you read the source, since it contains important information.

Use the number of marks by each question as a guide to how much time you should write.

Include quotations from the source in your answers if it is helpful to do so.

Sir Roger Ascham wrote a book entitled The Schoolmaster just before his death in 1568. In this extract from the book, he remembers visiting Bradgate, the home of Lady Jane Grey, in 1550. Lady Jane Grey was educated to a much higher standard than most noblewoman in Tudor England. Lady Jane Grey was, briefly, Queen of England, and was then executed on the orders of Mary Tudor.

Before I went into Germany, I came to Bradgate to take my leave of that noble Lady Jane Grey. Her parents, the Duke and Duchess with all the household were hunting in the park. I found her, in her chamber, reading *Phaedo* by Plato (1) in Greek, and that with as much delight, as some gentleman read a merry tale in Boccaccio (2).

I asked her why she would [wished to] lose [miss out on] such pastime in the park? Smiling, she answered me: "I believe all their sport in the park is but a shadow to that pleasure that I find in Plato. Alas! Good folk, they never felt what true pleasure meant."

"And how came you, madam," said I, "to this deep knowledge of pleasure, and what did chiefly allure [attract] you unto it; seeing not many women, but very few men, have attained thereunto?"

"I will tell you," said she. "One of the greatest benefits that ever God gave me is that he sent me so sharp and severe Parents, and so gentle a Schoolmaster. For when I am in the presence either of father or mother, whether I speak, keep silence, sit, stand, or go, eat, drink, be merry, or sad, be sewing, playing an instrument, dancing or doing anything else: I must do it even as perfectly as God made the world; or else I am so sharply taunted, so cruelly threatened, yea presently sometimes with pinches, nips and blows, that I think myself in hell, till time come that I must go to Mister Elmer, who teacheth me so gently, so

pleasantly, with such fair allurements [attractions] to learning, that I think all the time nothing, while I am with him."

I remember, that talk gladly, because it is so worthy of memory, and because also, it was the last time that ever I saw that noble and worthy lady.

(1) Plato was a famous Greek philosopher

(2) Boccaccio was an Italian writer who collected entertaining and romantic stories in a very popular book called *The Decameron*

1. How useful is this source as evidence of how girls in the Tudor period spent their leisure hours? **(8 marks)**
2. What does the source tell us about the nature of Lady Jane Grey's relationship with her parents? **(6 marks)**
3. What words and phrases used by Roger Ascham make it clear that Lady Jane Grey was exceptional in her enthusiasm for learning? **(3 marks)**
4. Why might Sir Roger Ascham's account of this meeting with Lady Jane Grey not be completely reliable as evidence about the education that aristocratic women received in Tudor times? **(8 marks)**

Total marks available: 25 marks



IPSWICH SCHOOL

Ipswich School

13+ Scholarship and Entrance Examination

Maths - Extension Paper

Time allowed: 1 hour

Practice Paper

You will need: a ruler, pen, pencil, eraser. Show your working and answers in the spaces provided in the booklet. Calculators are not permitted.

1. Calculate:

(a) $61 - 148$

Answer

(b) $371 - 51 - 33.$

Answer

2. If $x = 4$, $y = -3$ and $z = 6$, find the value of:

c) $x + y - z$

Answer

d) xy

Answer

e) xyz

Answer

f) $2y^2z$

Answer

g) $3(zy^2)$

Answer

3. Write down:

a) 13^2

.....

b) 196

.....

c) the cube root of 27

.....

d) 4^3

.....

e) $(-8)^2$

.....

4. For each of the following sequences, give the next two terms, the twentieth term and the rule for the n^{th} term of the sequence.

a) 17, 14, 11, 8,

the 5th term is the 6th term is

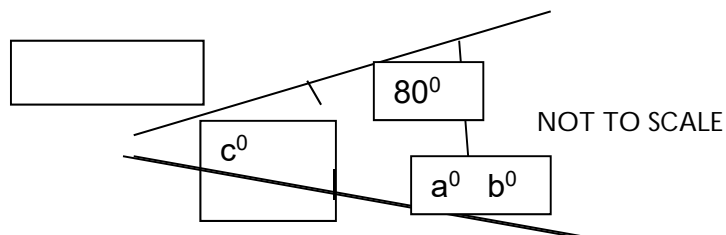
the 20th term is the n^{th} term is

4 (b) 0, 7, 26, 63,

The 5th term is the 6th term is

The 20th term is the n^{th} term is

5. (a) Find the angles marked a, b and c. Explain which rules you have used.



a = because

.....

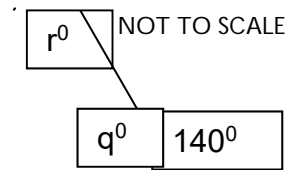
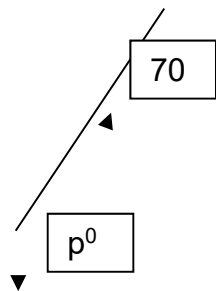
b = because

.....

c =because

.....

(b) Find the angles marked p, q and r.



p = q = r =

6. I have a bag containing 7 red counters, 9 blue counters and 5 green counters. I take out a counter and look at it. Write down the probability that my counter is:

(a) red

(b) not green.

(You should give your answers as fractions in their lowest terms.)

7. (a) I suspect a coin of being biased. I toss it 100 times and it comes up heads 79 times. Say in your own words whether you think the coin is biased or not.

.....
.....
.....

(b) **Estimate** the probability that the coin will come up heads next time I toss it.

My estimate is

8. Convert these fractions to recurring decimals:

(a) one-sixth

(b) five ninths.

(c) one seventh

9. Find the answers to the following:

(a) $6 \div \frac{1}{12}$

.....

(b) $5\frac{1}{4} \div 1\frac{1}{6}$

.....

10.(a) My friend says, 'If I increase a quantity by 10%, then decrease the result by 10%, I will get the figure I started with'. Show that my friend must be wrong.

.....

.....

.....

.....

(b) What is the real result of a 10% increase followed by a 10% decrease?

.....

.....

11. Expand the brackets and simplify the following expressions:

(a) $4(2x+3) - 3(x+2) = \dots\dots\dots$

$\dots\dots\dots$

(b) $3x + 5 - 2(3x+7) = \dots\dots\dots$

$\dots\dots\dots$

12. Solve the following equations:

(a) $4x + 3 = 15$

$\dots\dots\dots$

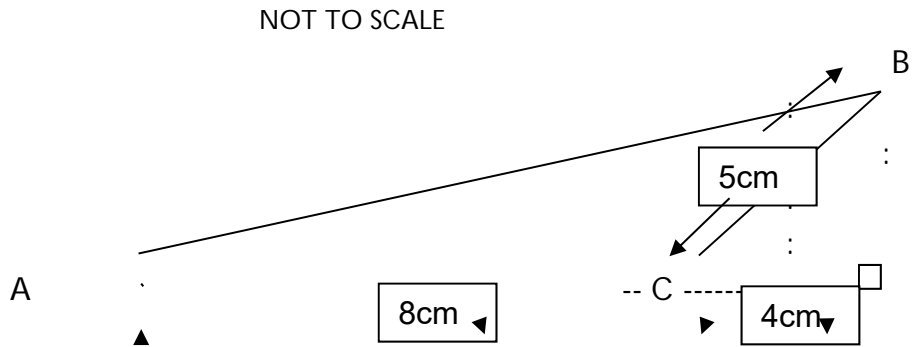
$\dots\dots\dots$

(b) $5x - 7 = 3(x+13)$

$\dots\dots\dots$

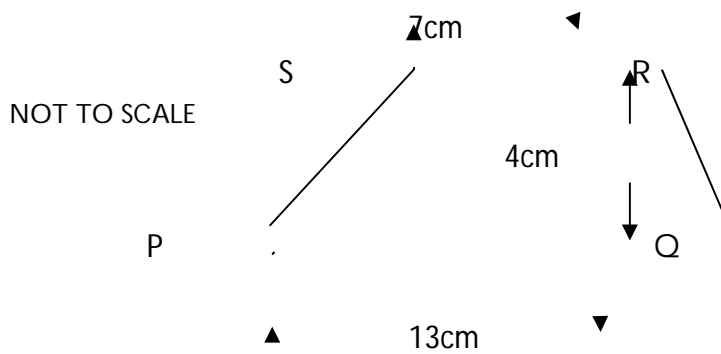
$\dots\dots\dots$

.....
 13. (a) Work out the area of the triangle ABC:



Area of ABC

(b) Work out the areas of the quadrilateral PQRS



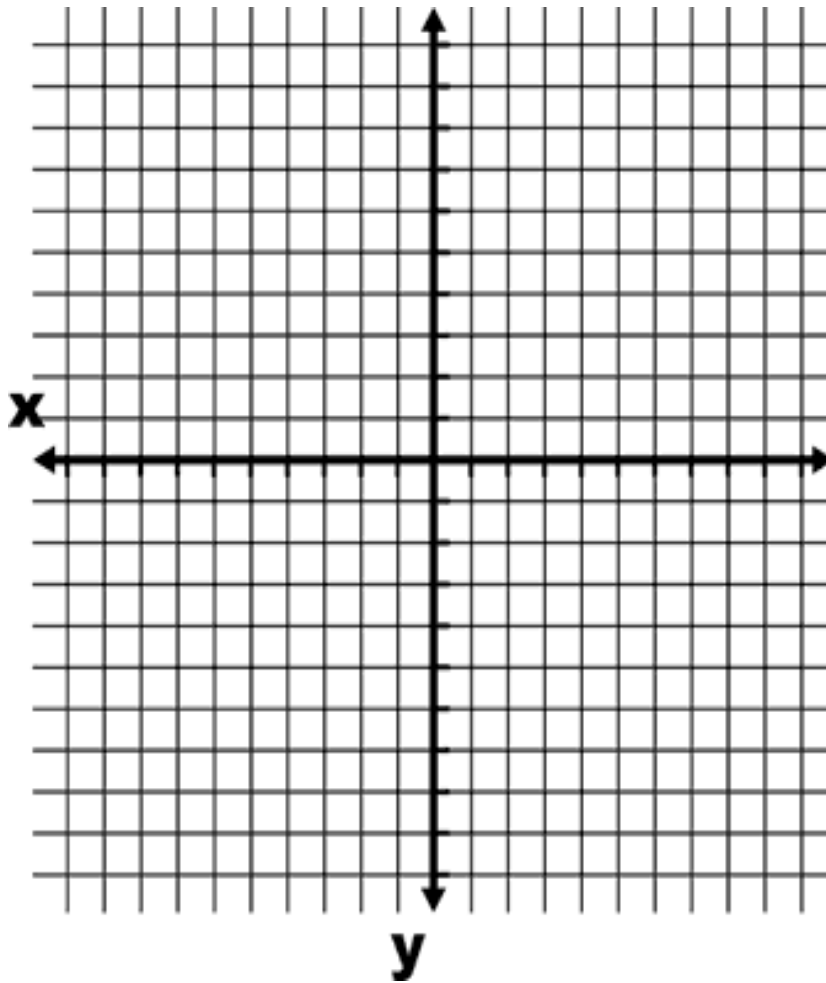
Area of PQRS

14. The point A has co-ordinates (-2, 4) and B has co-ordinates (8, - 10). Write down the midpoint M of the line segment AB.

M has co-ordinates

15. On the grid provided, draw the graphs of

(a) $y = 2x$ (b) $y = x + 5$ (c) $y = -x$ (d) $y = -4$



16. Find the missing numbers:

(a) $520 \div 0.01 = \dots\dots\dots$

(b) $48.29 \div 0.001 = \dots\dots\dots$

17. (a) Write the following numbers as products of their prime factors.

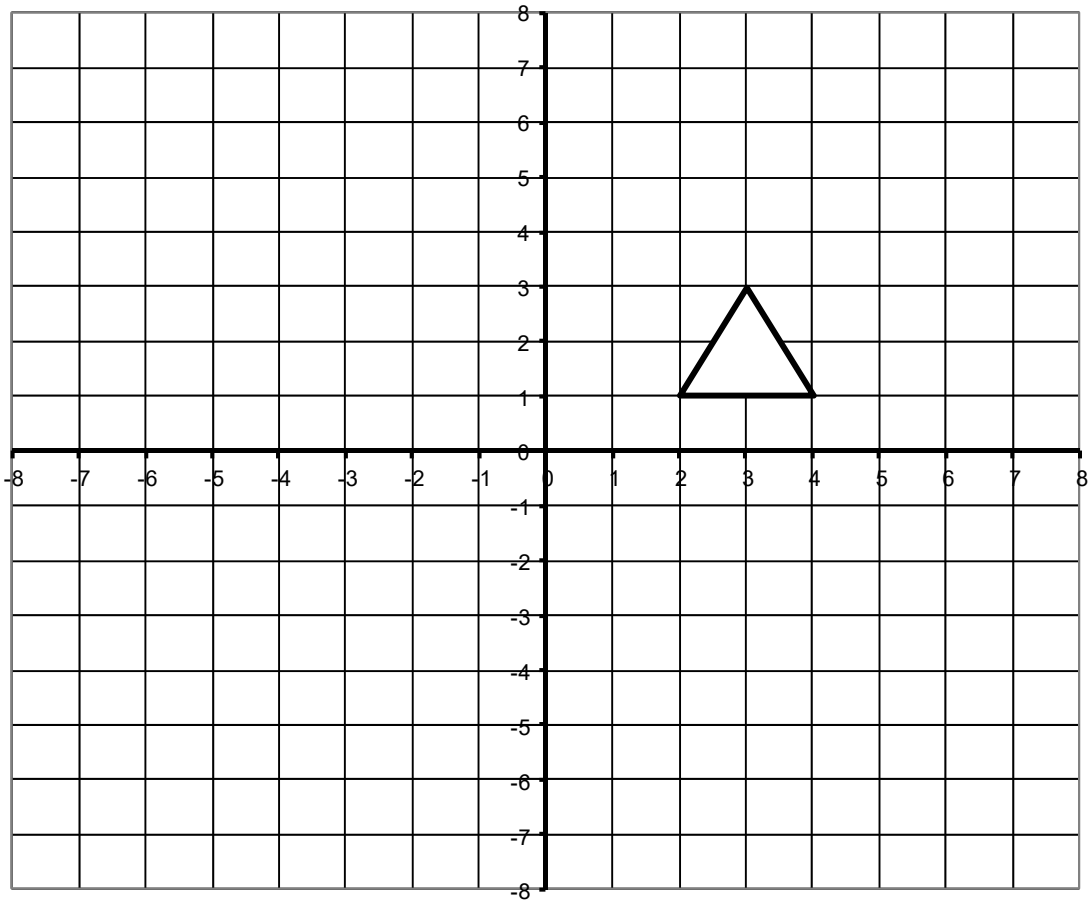
(i) $60 = \dots\dots\dots$

(ii) $216 = \dots\dots\dots$

(b) Find all the factors of 24.

.....

18. Look at the triangle on the grid.



(a) draw the reflection of the triangle, using the line $y=x$ as the mirror line

(a) draw the enlargement of the original triangle, with the centre of enlargement at (5,2) and scale factor 2.

19. On a fishing trip, Fred caught several fish all of which were weighed. These weight, in kg, are listed below:

2.7, 3.6, 0.9, 2.3, 2.7, 1.2, 1.9, 2.8, 4.7, 1.3

(a) Find the mean weight of the fish

(b) Fred managed to catch one more fish and when this extra fish was included, the new mean weight was 2.5kg. What was the weight of this extra fish?

.....

20. Work out the following:

(a) $\frac{2}{3} + \frac{3}{8}$

Answer

(b) $1\frac{5}{8} - \frac{5}{6}$

Answer

(c) $2\frac{5}{8} - 1\frac{7}{12}$

Answer

21. Work out the highest common factor of :

(a) 40 and 24

.....

(b) 108 and 72

.....

22. Work out the lowest common multiple of:

(a) 8 and 12

.....

(b) 21 and 91

.....

You should only attempt this question after you have made a serious attempt to do all the others.

23. Is $3^{444} + 4^{333}$ divisible by 5? Explain your reasoning clearly.



IPSWICH SCHOOL

Ipswich School

13+ Entrance and Scholarship Examination

Physics

Additional materials required: Graph paper

Attempt all the questions. You may use a calculator but show how you have used the figures given in the question to get your answer.

1) This question is about electric circuits.

a) In the spaces below, draw the circuit symbols for

i) a cell;

ii) a lamp;

iii) a variable resistor.

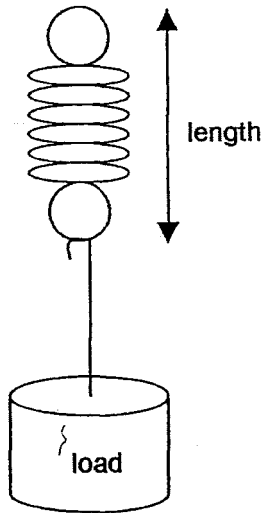
[3]

b) Draw a circuit diagram showing two cells in series connected to two lamps wired in parallel. Include one switch to control both lamps and two variable resistors so that the lamps can be dimmed separately.

[4]

2) This question is about stretching springs.

Sarah has been investigating how a spring stretches when it is loaded with different weights. Her results are shown in the table below.



Load /N	Length /cm	Extension /cm
0.0	4.0	0.0
1.0	4.4	0.4
2.0	4.8	0.8
3.0	5.2	1.2
4.0	5.6	1.6
5.0	7.2	3.2
6.0	8.0	4.0
7.0	8.9	4.9
8.0	10.0	6.0

a) Explain how Sarah has calculated the extension values in her table.

[1]

b) Write your name clearly on the graph paper provided then draw a **line graph** showing how the extension of the spring varies with the load.

[4]

c) At what load does the spring start to become permanently deformed? Explain how you have arrived at your answer. Drawing on your graph may help.

[2]

d) Sarah repeated the experiment with two identical new springs, attached to each other side by side (in parallel). Add a line to your graph to show the results that you would expect her to get from this new experiment. Label the new line '**two springs in parallel**'.

[2]

3) This question is about the density of substances.

$$\text{Density} = \text{Mass} / \text{Volume}$$

a) Suggest a reason why an engineer might find data about the density of substances useful.

[2]

b) Water has a density of 1 g/cm^3 . Calculate the mass of water in a 2 litre bottle of water.

[4]

c) Ice will just float in water. How does the density of ice compare with water?

[1]

d) A glass of cold water containing two ice cubes is left in the sun on a hot day. As the ice melts what happens to the level of liquid in the glass? Explain your reasoning.

[2]

4. This question is about solids, liquids and gases

a) Explain the main differences between solids, liquids and gases by referring to the behaviour of the particles from which they are made. Three small labelled diagrams may help your explanation.

[4]

b) When you heat solids, they normally become liquids and then gases. What is happening to the particles as this happens?

[2]

c) Describe an experiment you have seen to demonstrate **either** diffusion **or** expansion of solids or liquids. Draw a labelled diagram of the equipment. Explain what happened and what you learned from the results.

IPSWICH SCHOOL

13+ ENTRANCE AND SCHOLARSHIP EXAMINATION

PHILOSOPHY, RELIGION & ETHICS

Time allowed: 30 minutes

TWO questions only should be attempted. Candidates should remember that it is important to answer **BOTH** questions rather than spend too much time on one. 15 minutes should be spent on each answer. Each question is worth 10 marks.

A1] Describe how a commitment to a religion may affect a person's life. Use examples to explain your answer.

A2] 1. Describe the birth ceremony in a religion you have studied.
2. Explain why parents make this commitment

A3] "Arranged marriages are more likely to succeed."
Do you agree? Give reasons for your answers, showing that you have considered another point of view.

A4] Gandhi said, "There are many things for which I am prepared to die, but none for which I am prepared to kill."
What did he mean?
Do you agree with him or not? Explain your reasons.

A5] 1. What is meant by the term **pacifism**?
2. Identify a famous pacifist and explain briefly what he did/said that makes his contribution to history important.

A6] 1. Outline a parable that Jesus told.
2. What is the main idea in the parable?

A7] Outline Christians beliefs about Jesus that suggest that he wasn't just an ordinary man.

A8] 1. Why is suffering and evil in the world a problem for people who believe in God?
2. How do Christians explain suffering and evil in the world?