



IPSWICH SCHOOL

Entrance Tests
Year 7 Entry
Practice Papers



IPSWICH SCHOOL

ENTRANCE EXAMINATION PRACTICE PAPER

MATHEMATICS

Time allowed: 45 minutes

Calculators are not permitted. Write your answers in the spaces provided. Do not use correction fluid. Show some working where possible, using the spaces provided. You have 45 minutes and you will be told when there are 10 minutes left.

1. Write the following numbers in figures (for example, twenty-three is **23** in figures)

- (a) Two hundred and nine
- (b) Nine thousand and ninety
- (c) Sixty-five thousand and sixty-five

2. Calculate the following:

- (a) $9 \times 6 =$
- (b) $63 \div 9 =$
- (c) $14 \times 10 =$
- (d) $270 \div 100 =$
- (e) $0.4 \times 1000 =$
- (f) $5 \times 72 =$
- (g) $325 \div 25 =$
- (h) $24 \times 25 =$
- (i) $6060 \div 5 =$
- (j) $999 \div 5 =$
- (k) $(10 - 7) \times 8 =$
- (l) $6 \times 15 + 5 =$
- (m) $8 + 3 \times 4 =$
- (n) $9 - 2 \times 4 =$

3. Use a method of your own choice to do the following calculations:

(a) 417×31

(b) $873 \div 9$

4. Calculate the following fractions:

(a) two-thirds of thirty-six is

(b) $\frac{3}{4}$ of 36 is

(c) $\frac{5}{8} \times 32 = \dots\dots\dots$

5. Calculate the following as percentages – the first one is done for you.

(a) 7 out of 10 is**70%**.....

(b) 6 out of 30 is

(c) 7 out of 100 is

(d) 3 out of 1500 is

6. Continue the number patterns for three more places, as shown in the example.

Example: 1, 2, 3, 4,**5**.....,**6**.....,**7**.....

(a) 35, 28, 21,,,

(b) 2, 5, 10,,,

(c) 10, 0.1, 0.001,,,

7. Calculate the following:

(a) $7.53 + 8.04 = \dots\dots\dots$

(b) $9.71 + 32.8 = \dots\dots\dots$

(c) $29.73 - 12.69 = \dots\dots\dots$

(d) $27.2 - 9.33 = \dots\dots\dots$

8.

Do this question on the axes provided. Draw the following points:

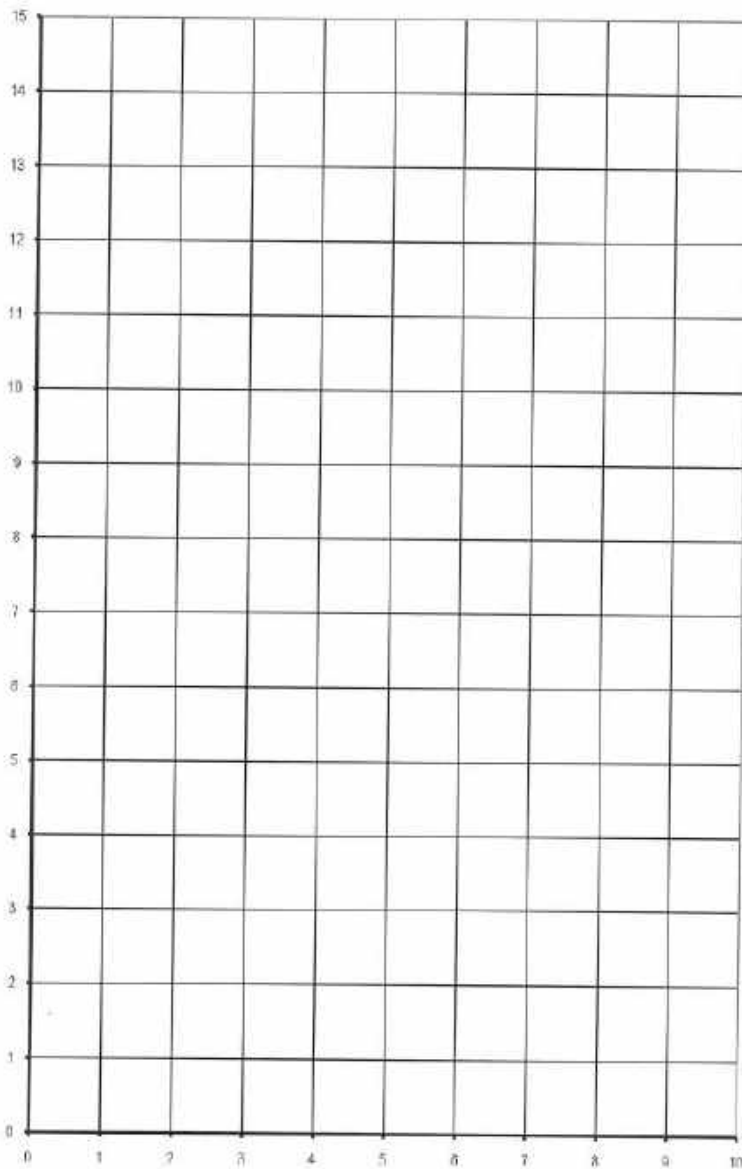
A(1,2), B(1,7), C(4,7), D(4,12), E(7,12), F(7,7), G(9,7), H(9,2) and join the points in that order.

(a) What is the perimeter of ABCDEFGH?

.....

(b) What is the area of ABCDEFGH?

.....



9. A class of 10 pupils takes two tests, in Maths and English. Here are the marks out of 100:

Maths: 46, 47, 48, 50, 50, 50, 50, 59, 60, 61

English: 40, 70, 55, 79, 70, 29, 70, 77, 79, 70

- (a) What is the mode (i) in Maths.....
(ii) in English.....
- (b) What is the range (i) in Maths.....
(ii) in English.....

Do you think that the class is better at Maths or English? Give reasons for your answer.

.....
.....
.....

10.

- (a) Write down all the factors of 24
- (b) Circle the prime numbers in this list: 11 27 1 5 51 2 17
- (c) Put the following numbers in order of size, beginning with the smallest

95%, 0.875, 0.9, $\frac{3}{4}$, 0.809

.....

11. Round the following quantities to the nearest **centimetre**:

(a) $2.797 \text{ m} \approx \dots\dots\dots$

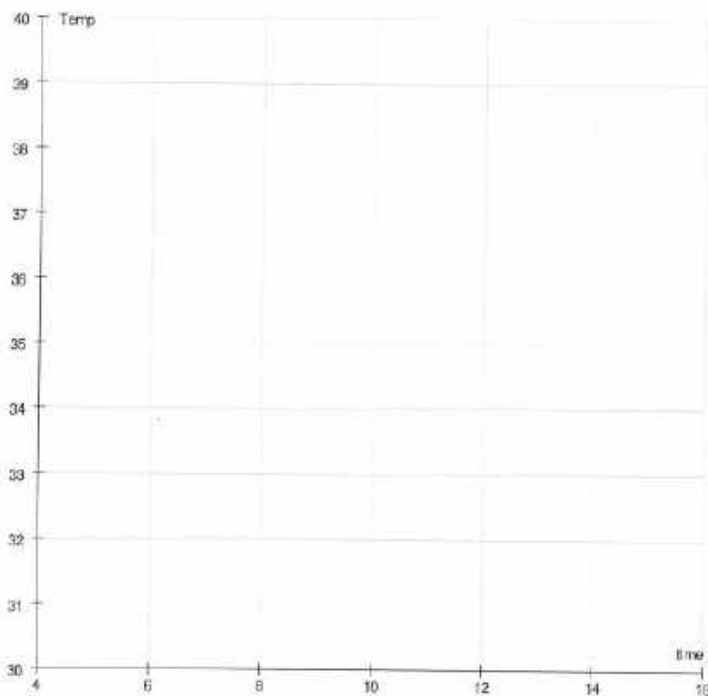
(b) $917.5 \text{ cm} \approx \dots\dots\dots$

(c) $835 \text{ mm} \approx \dots\dots\dots$

12. The table shows the temperature of a hospital patient over the course of a day.

Time	6 a.m.	8 a.m.	10 a.m.	12 p.m.	2 p.m.	4 p.m.
Temp ($^{\circ}\text{C}$)	35	34.5	37	37.5	39	39.5

On the squared grid below, draw a line graph to display these data. Below your line graph make one comment about the condition of the patient.



My comment:

.....

13. Reflect the word 'Lysander' in the mirror line

LYSANDER



14. Consider the following three statements:

$$1 = 1$$

$$1 + 3 = 4$$

$$1 + 3 + 5 = 9$$

Showing your working clearly, can you find a quick way of adding up the first ten thousand odd numbers?



IPSWICH SCHOOL

ENTRANCE EXAMINATION

2023 entry

ENGLISH

Time allowed: 1 hour

**We suggest that you spend 30 minutes on Section A
and 30 minutes on section B**

SECTION A: READING

Read the following passage:

	Line number
'One knot blue, two knots yellow, three knots red, four knots green...' The young boys chanted the pattern of the carpet they were weaving. Bony little fingers deftly drew the card down the thread; warp and weft...warp and weft...top to bottom, right to left...warp and weft and knot.	5
Behind the loom inside a dark mud hut, crouching like caged animals, sat a line of boys. With backs against a wall, their thin arms rose and fell as they drew the threads from top to bottom, right to left, warp and weft and knot. They could have been musicians plucking at strings, but these were carpet weavers whose harmonies were of the eye not the ear as, bit by bit, the glorious patterns and hues of a rich carpet emerged in the darkness. 'One knot blue, two knots yellow, three knots red, four knots green...' The boys wove their thread, prompted and guided by old Rama, the only man among them, who had the pattern pinned to an upright in front of him.	10 15
'Ishwar, you're dreaming again!' bellowed a harsh voice. THWACK! The hand of the overseer struck a boy around the head.	
The boy, Ishwar, faltered and nearly fell over sideways but Bharat, crouching next to him, braced his body and managed to keep his friend upright.	20
'Keep your mind on the job. There'll be no supper for any of you tonight until you've woven another ten inches,' threatened the man. His great shape filled the doorway and blotted out their only source of light. Then he was gone. There was a low groan from the boys. Another ten inches before they would eat! That could take two hours or more, for this was the most complicated carpet they had ever woven - and the whole thing was to be completed within seven months - when an ordinary carpet took at least twelve.	25
A wealthy man had come along the rough track to the village in his white Mercedes. When he reached the brick house of Anoup, the carpet manufacturer, he got out like a raja*, surrounded by shy jostling children and deferential elders, all of whom noted the gold rings embedded in his chubby fingers, and the chunky foreign watch just glinting beneath the cuffs of his smart suit.	30

Extracted from, The Paradise Carpet by Jamila Gavin

*Raja - Indian king or prince

SECTION A: READING

Answer the following questions using your own words as far as possible.

1. Explain the following words as they are used in the passage.
 - (a) “deftly” (line 3)
 - (b) “hues” (line 11)
 - (c) “faltered” (line 18)
 - (d) “jostling” (line 31)

(1 mark each)

2. Write a full sentence to explain the meaning of the following:
 - (a) “harmonies were of the eye not the ear” (line 10)
 - (b) “braced his body” (line 19)
 - (c) “blotted out their only source of light” (line 23)
 - (d) “gold rings embedded in his chubby fingers” (lines 32-33)

(2 marks each)

3. Now write a short paragraph of several sentences to answer each of the following two questions. You should use quotations from the passage to support your points.

- (a) Look closely at lines 1-15. How does the writer present the boys?
- (b) Look closely at lines 16-34. How does the writer present the adults?

(4 marks each)

(Total: 20 marks for Section A)

PLEASE TURN OVER FOR SECTION B

SECTION B: WRITING

This section assesses your ability to use language creatively and accurately. The piece you produce can therefore be real or imagined.

Either:

1. Write a description of visiting an unfamiliar place.

(30 marks)

Or:

2. Write about the place where you live. This could be your neighbourhood, town or even your country.

(30 marks)

Please note: The 30 marks available for Section B are allocated as follows:

- 10 marks for structure and development
- 10 marks for imagination and detail
- 10 marks for spelling, punctuation and grammar