

A Guide to Boarding for Forces families



We are delighted to announce that we accept Continuity of Education Allowance (CEA) funding.

Continuity of Education Allowance (CEA) is offered by the Ministry of Defence to assist with funding a place in a Boarding school in order to provide continuity of education for a child, and to enable the spouse of a Service person to accompany them on assignments. This means that qualifying Armed Forces' parents, in receipt of the CEA, will be requested to pay 10% of the annual school fees once the MOD's contribution is taken into account.



At Ipswich School, we provide a welcoming Boarding experience within an outstanding British co-educational independent school.

Westwood Boys' Boarding House is a Victorian mansion set in wooded grounds, just a 5 minute walk from the main school site. Anglesea Heights Girls' Boarding House is a modern attractive space, with ensuite facilities providing an experience similar to a university hall of residence. All of our Boarders benefit from a friendly home-from-home experience.



Westwood Boys' Boarding House

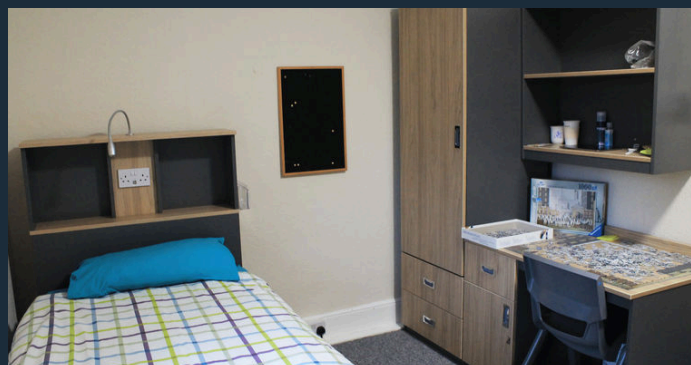


Our Boarding provision is expanding ahead of 2025/26 by when we will have three Boarding Houses: one boys (11-18), one girls (11-18) and one co-ed, Sixth Form (16-18). This will bring our Boarding community up to 120 girls and boys.



Our school is located near the stunning Suffolk coast within two hours of London Heathrow Airport and an hour of London Stansted Airport.

We are proud to offer an outstanding educational experience that combines **academic excellence** with **extensive extra co-curricular activities**, including a thriving Combined Cadet Force (CCF) and exceptionally high-quality provision for Sport, Music, Drama and Art.



Our academic results saw us ranked - by The Sunday Times in December 2024 - as the **top independent school in Norfolk and Suffolk** (and one of the very best in East Anglia as a whole), with 84% of A Level grades at A*, A or B in Summer 2024.



PASTORAL CARE FOR OUR BOARDERS

Our students are happy - reaching their potential, supported by outstanding pastoral care and part of our friendly community. There is a team of friendly staff who are experienced in looking after our Boarders. Tutors keep a close eye on each individual student to ensure that they balance their activities and are happy and fulfilled.

As well as tutors, there is also a member of staff on duty from 07:00 – 22:30, with Houseparents on call overnight. They are there for our boarders to have a chat with, discuss the school day and be a support if there is anything that they might be worried about.

Our Admissions team is fully equipped to handle the CEA application process, ensuring a smooth transition for your child into our military boarding community. Please contact admissions@ipswich.school for more information.

TRIPS AND ACTIVITIES

In the Boarding Houses weekend activity sessions may include: sport on the astro, gym, basketball or badminton, baking, crafts, visits to the beach and dry ski slope.

If there is an activity that a Boarder would particularly like to do, our Boarding staff are always happy to help.



The Education Advisory team (UK) is available to provide guidance and information to Services families and eligible Ministry of Defence (MOD) civilians regarding their children's education in the UK. They can be contacted via email at RC-DCS-HQ-EAT@mod.gov.uk.